

Wiping out Waste at Wamberal Public School

Size of school in 2019 - 750 Students; 60 Staff



We would like to acknowledge the traditional custodians of this land. We pay our respects to the Elders past, present and future for they hold the memories, the traditions, the culture and hopes of Aboriginal Australia. We remember that under the concrete and asphalt this land is, was and always will be traditional Aboriginal Land.



Wiping Out Waste 2019

Aim:

- less waste to landfill
- maximise resource recovery
- creating a zero waste culture in the school communities participating
- changing habits and changing behaviours

Intended benefits: financial savings for each school and achieving sustainability outcomes.

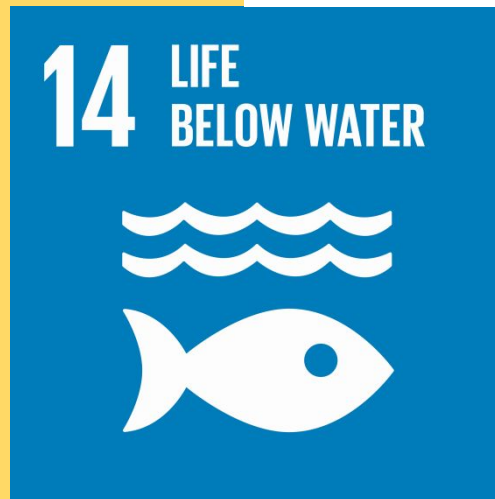
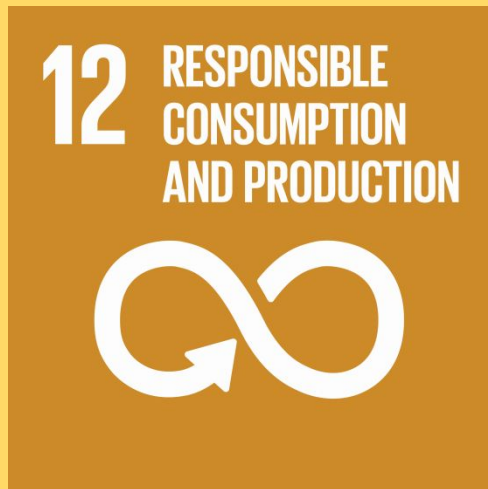
This was a Pilot Program delivered by Rumbalara Environmental Education Centre, funded by Central Coast Council and supported by Cleanaway Waste Educators.



Thinking globally and acting locally

United Nations

SUSTAINABLE
DEVELOPMENT
GOALS



Learning to be less wasteful is part of being a good global citizen.
Sustainability is about considering the needs of future generations.



Wamberal PS Waste Audit in 2019



BEFORE



AFTER

WAMBERAL PS Waste Audit Day



We measured all the waste from one day and recorded the mass and volume of each category - organic, paper and cardboard, recyclable containers and mixed waste.

WAMBERAL PS

Waste Audit Day



Wamberal PS Waste Audit 13/6/2019 Number of Students: 750
Number of Staff: 60
WAI = Waste Audit!

	Playground		Classroom/ Library		Office/Staff room		Canteen		TOTAL	
	MASS (kg)	VOLUME (litres)	MASS (kg)	VOLUME (litres)	MASS (kg)	VOLUME (litres)	MASS (kg)	VOLUME (kg)	MASS	VOL
FOOD & ORGANIC	28	90	10.4	25	0.2	1	0.4	2	39 [WAI: 39.4kg]	118 [WAI: 137L]
RECYCLABLE PAPER & CARDBOARD	0	0	8	148	2.5	61	0	0	105 [WAI: 28.3kg]	209 [WAI: 199]
RECYCLABLE CONTAINERS	1	22	0.5	10	0.6	8	0.2	4	2.3 [WAI: 2.3kg]	44 [WAI: 46L]
MIXED WASTE	9	244	3.3	78	1	21	0.7	25	14 [WAI: 19.4kg]	368 [WAI: 238L]
TOTALS	38	356	22.2	261	4.3	91	1.3	31	65.8 Waste Audit! was 82.4kg	739 Waste Audit! was 620L
Return & Earn 108 containers / one day \$10.80 \$54m one week in 1 term \$540 in 1 YEAR \$2160 31 week term year										



ACTIONS taken to reduce waste to landfill and increase resource recovery

There has been increased consciousness in whole school about waste to landfill and how we can reduce it.

This followed the two waste audits we did as part of the Wiping out Waste pilot program (funded by Central Coast Council) and our whole school engagement in PBL (Positive Behaviour for Learning) lessons based on our waste data and how we are reducing it.



ACTIONS taken to reduce waste to landfill and increase resource recovery

Food and Organic waste

We have started and maintained a worm farm and gardening with our environmental group run by Stage 3 students.

Recyclable containers

We encourage students to take recycling home with them.

Landfill

We focused on continuing Nude Food Tuesdays and encouraging students to take their rubbish home to recycle their waste effectively at home.

Paper & Cardboard

Our recycling of paper has increasingly strengthened with student's awareness of the significance of the bin and the importance of using it for the right material.





Wamberal Public School
Friendship & Learning



Reduce, Recycle, Compost

Nude Food Tuesdays

Starting Tuesday week 1, Term 2

What is nude food?

Nude food is food without packaging. This reduces the amount of waste that goes into bins to be sent to landfill. Durable, reusable containers are a great way to bring food to school, they provide long-term environmental and cost saving benefits.

When is Nude Food day at Wamberal Public School?

Nude Food day is every **Tuesday** at Wamberal Public School- Commencing week 1, Term 2

We can reduce waste to landfill by packing Nude Food

Pack

- ✓ Snacks in reusable containers
- ✓ Drinks in a reusable bottle
- ✓ Reusable utensils when necessary
- ✓ A reusable lunchbox or container



Avoid

- X Food packaged in plastic bags, clingwrap or foil
- X Single-use drink boxes, bottles, cans or cartons
- X Single use knives, forks and spoons
- X Pre-packaged or single serve food items



The following slides are a presentation shared with all students to help them understand the importance of Wiping out Waste - as part of our PBL (Positive Behaviour for Learning) Program - developing Safe Respectful Learners (SRL).



What does our
Wiping Out Waste
team do at WPS?

Sort through the rubbish from our playgrounds to see what type of waste we have.



Collect and sort waste from classroom recycling bins.



Why do you think
we sort through
the rubbish?

How much rubbish do you think we actually collect in one day at WPS?

We have 39kg of food waste per day-
that's the size of a year 3 student

We have 28kg of recyclable rubbish per
day - that is the size of a year 1 student.

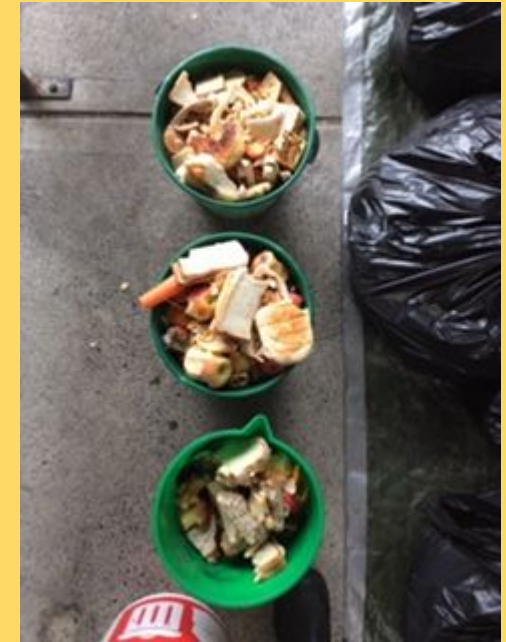
We have 20kg of mixed waste, soft
plastics, slushy cups, straws, lunch
wrappings - that's the weight of a
Kindergarten child



This is rubbish collected from classrooms, admin, library, canteen and the playground



This is soft plastic that has been sorted from the mixed waste.



This a small sample of the food waste collected from the bins



SRL (Safe Respectful Learner) asks:
What can we do to turn our
waste into real money?



We can participate in 10c
cent Return and Earn.

In 1 day we could make
\$10 dollars, that is nearly
\$2000 a year.

You can also do this at
home!

SRL (Safe Respectful Learner)
asks

What can students at WPS
do to help reduce our waste
to landfill?

NUDE FOOD TUESDAY

- You can help reduce our waste to landfill by bringing a Nude lunchbox every Tuesday.



Recycling your soft plastic

You can take your soft plastic home and recycle it.

Have a look at what is made out of soft plastic!

<https://www.youtube.com/watch?v=eXX5l9xy6p8>

Another video about it is:

<https://www.youtube.com/watch?v=ZSFpOfSXmas>



Soft plastic recycling

The REDcycle Program makes it easy for consumers to keep plastic bags and packaging out of landfill.

Do the scrunch test



YES PLEASE

Some of the most commonly recycled items include:



Please make sure your plastic is dry and as empty as possible. For a comprehensive list of what can be REDcycled and more information, check the website.

NO THANKS

We cannot accept the following:

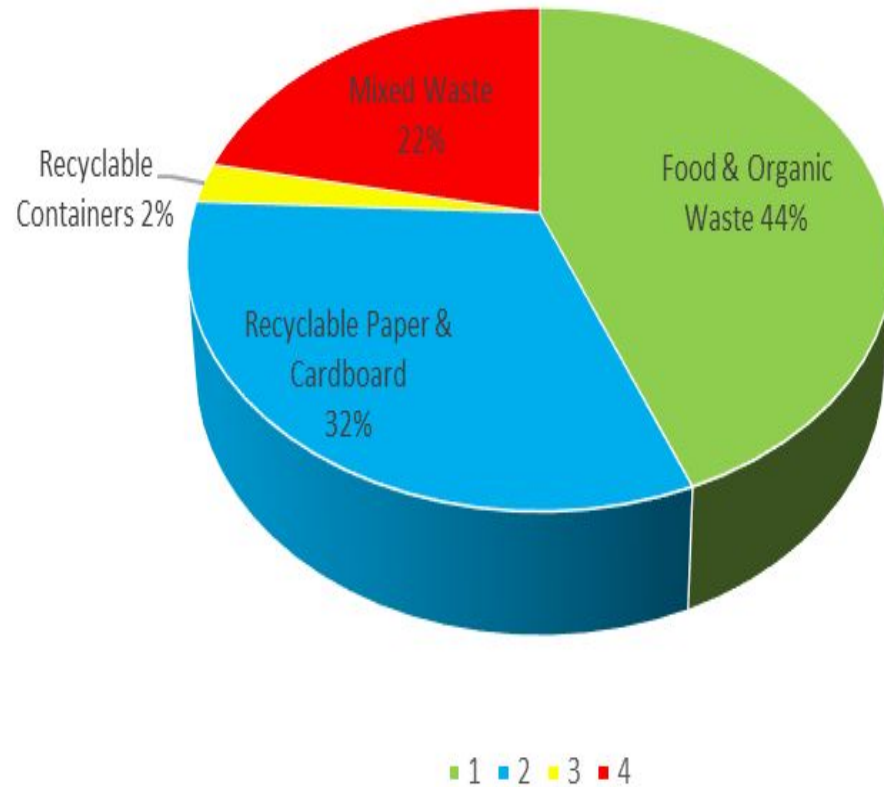
- X Plastic bottles
- X Plastic containers
- X Any rigid plastic such as meat trays, biscuit trays or strawberry punnets
- X Glass
- X Rubber
- X Paper and cardboard
- X Tin cans
- X Food waste

*Contact your local council to check if it can go into your kerbside collection.

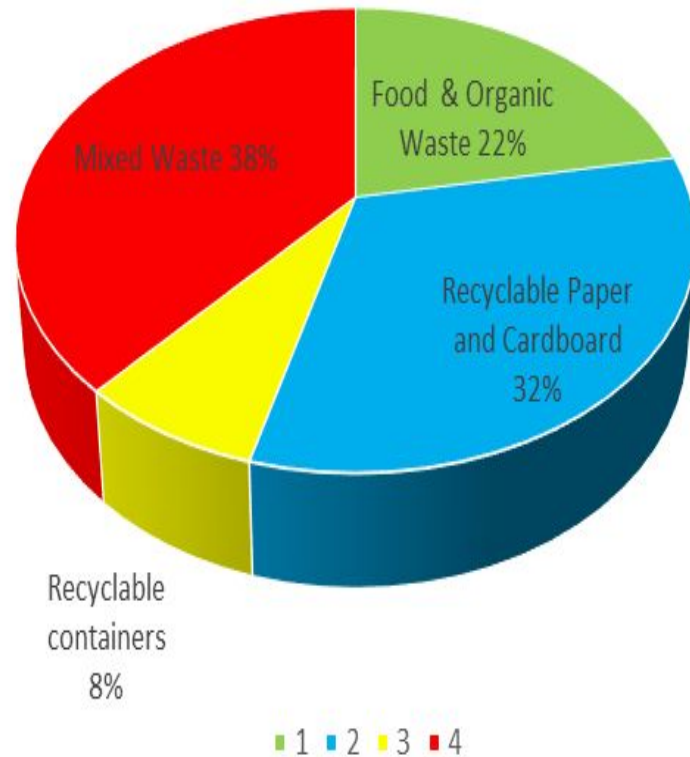
www.redcycle.net.au

		ADMIN, STAFF									
Waste Audit Data	CLASSROOMS	ROOM + SICK BAY	PLAYGROUND	CANTEEN	TOTAL	weekly	term	year			
MASS (KG)					MASS (KG)						
FOOD & ORGANIC WASTE	15.1	0.9	20.3	3.1	39.4	197	1970	7880	NEARLY 2 TONNES A TERM		
RECYCLABLE PAPER & CARDBOARD	11.8	16.5	0	0	28.3	141.5	1415	5660			
RECYCLABLE CONTAINERS	0.3	0.4	1	0.6	2.3	11.5	115	460			
MIXED WASTE	2.8	1.9	14	0.7	19.4	97	970	3880			
TOTAL:					89.4	447	4470	17880			
VOLUME (LITRES)					VOLUME (LITRES)	VOLUME (LITRES)					
FOOD & ORGANIC WASTE	38	5	78	16	137	685	6850	27400			
RECYCLABLE PAPER & CARDBOARD	134	65	0	0	199	995	9950	39800			
RECYCLABLE CONTAINERS	10	7	18	11	46	230	2300	9200			
MIXED WASTE	25	31	172	10	238	1190	11900	47600			
TOTAL:					620	3100	31000	124000			

WAMBERAL PS Waste Audit
2/5/19 Mass (Kg)



Wamberal PS Waste Audit
2/5/19 Volume (Litres)



Reduce, recycle,
reuse at home too.



Thank you for helping the WOW team work
towards reducing waste to landfill from
Wamberal Public School.